



Proving once again, **CommBOX** is the **TOUGHEST** SCREEN ON THE MARKET

**30% OFF**

**60" Interactive Classic 4K TouchScreen**

**\$3,200.00** +GST

\$3,520.00 inc.

Order now ▶

*Ultra responsive commercial grade LED touchscreen with superior image quality, excellent viewing angles and brightness.*

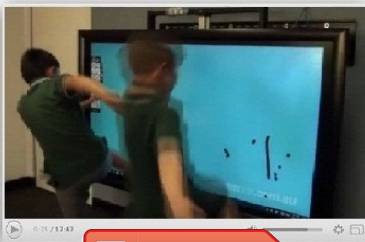
*Sleek design and easy to use with 17 year life expectancy and very little maintenance required.*

#### Optional Extras:

- \* Professional installation
- \* Complete user training
- \* Mobile-stand/ Tilt-trolley/ Wall-bracket
- \* Decommission & disposal of existing equipment
- \* Delivery

**Also available in 70", 80" , 90" & 103"**

CommBox is now on DAHL  
Defence accredited hardware contract



Watch



Digital Signage Melbourne   
A division of Save Time Visuals

**Save Time Visuals**  
audio visual solutions  
1300 658 986  
www.savetimevisuals.com.au 

Email [savetime@savetime.net.au](mailto:savetime@savetime.net.au)

Term & Conditions: 1. Delivery & Installation charges apply. 2. This offer cannot be used in conjunction with any other offers and excludes any existing quotes 3. Installation by an experienced integrator is recommended. 4.Errors & Omissions accepted. 5. For further details contact STV on 1300 658 986 or visit our website [www.savetimevisuals.com.au](http://www.savetimevisuals.com.au) 6. Offer valid while stocks last. 7. STV reserves the right to remove this offer at any time.